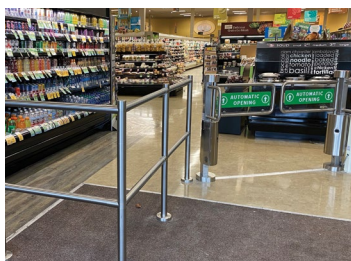


Reduce Theft and Protect Associates and Customers With Security Gates



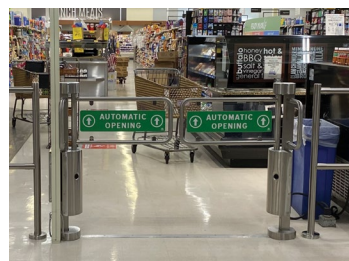
Security gates are an essential solution to help retailers protect their people, property and assets. In addition to monetary losses, nearly two-thirds of the retailers surveyed by the National Retail Federation* said that violence associated with store thefts has risen. Security gates, installed at the front of your stores, can offer relief from flash mobs, smash and grab attempts, and shopping cart pushouts.



Entry and Exit Traffic Flow



Customer Traffic Control

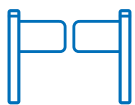


Walkout Prevention



Occupancy Compliance

- ▶ Help encourage customer movement in predefined directions like entrance flow to the return desk or service counters
- ▶ Reduce unwanted traffic paths and fraudulent returns by separating the returns desk from the rest of the store
- ▶ Reduce shopping cart walkouts with unpaid merchandise
- ▶ Help manage occupancy compliance and provide a safer environment for customers and associates



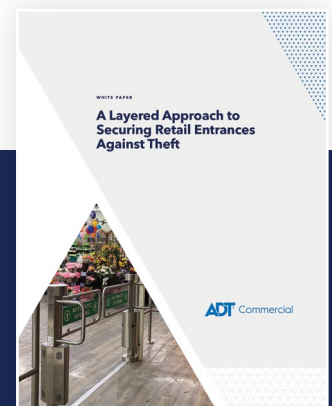
Security gates can be integrated with video surveillance and electronic article surveillance (EAS) systems to provide a layered approach to security at the exits and entrances to your locations.



Download the Retail Egress Solutions White Paper

To learn more about the use of security gates and other retail security solutions, please scan the QR code with your phone's camera or visit: <https://comm.adt.com/RetailEgressWP>

* [nrf.com/media-center/press-releases/pandemic-led-increase-retail-security-threats-according-nrf-study](https://www.nrf.com/media-center/press-releases/pandemic-led-increase-retail-security-threats-according-nrf-study)



The National Strength You Want. The Local Knowledge You Need.

You can rely on us to be your One Ideal Partner for retail solutions that help you reduce costs, mitigate risks and protect your people, property and assets.

MAKE THE RIGHT CHOICE

- ▶ **Innovate with expert advice**
Benefit from decades of enterprise-level industry experience, custom designs and specialized training
- ▶ **Single point of contact**
Streamline your security, fire and life safety program with one call for all of your needs
- ▶ **Customer service excellence**
Your systems are serviced by a team of dedicated, trained and qualified commercial technicians
- ▶ **Always there for you**
Dedicated commercial operations centers provide 24/7/365 UL Listed monitoring and customer support
- ▶ **Take control of your security**
Gain visibility and take action on your security with eSuiteSM cloud-based account management
- ▶ **Easy to upgrade to ADT Commercial**
We make it painless to switch providers with a dependable onboarding process



Let's start a conversation

855-ADT-COMM

adtkommercial.com

ADT[®] Commercial

Powered by Experience. Driven by Excellence.[™]